



**HONG KONG SINDA THERMAL TECHNOLOGY LIMIED.**

**A HEATSINK AND PRECISION METAL PARTS CUSTOMIZING PROVIDER**

---

## ABOUT US

Our factory was Founded in 2014, and located in Dongguan city China, we are providing varieties of heatsinks and precious metal parts. Our plant possesses advanced high precious CNC machines and stamping machines, also we have kinds of testing and experiment instruments and professional engineering team, so our company can manufacture and provide high quality heatsinks which posses high precious and performance and exceed the imported products. All the products accord with Rohs/Reach standard. Our company has been a partner with many customers for good quality, excellent service and competitive price. We have a terrific reputation in this industry. In 2021, To cooperate with the international customers, we founded a Hongkong company Sinda Thermal, it makes us export the heat sinks to the overseas customers more conveniently.

---

# CORE VALUE

- *Customer First*
  - *Information Classified*
  - *Focus*
  - *Quality*
  - *Teamwork*
  - *Independence*
-

# STRATEGIC COOPERATION



# Core Competencies

## **A – Product varieties:**

Wide range of metal products, standard or customized products

## **B – Engineering:**

Design support & professional Engineering

## **C – Agility:**

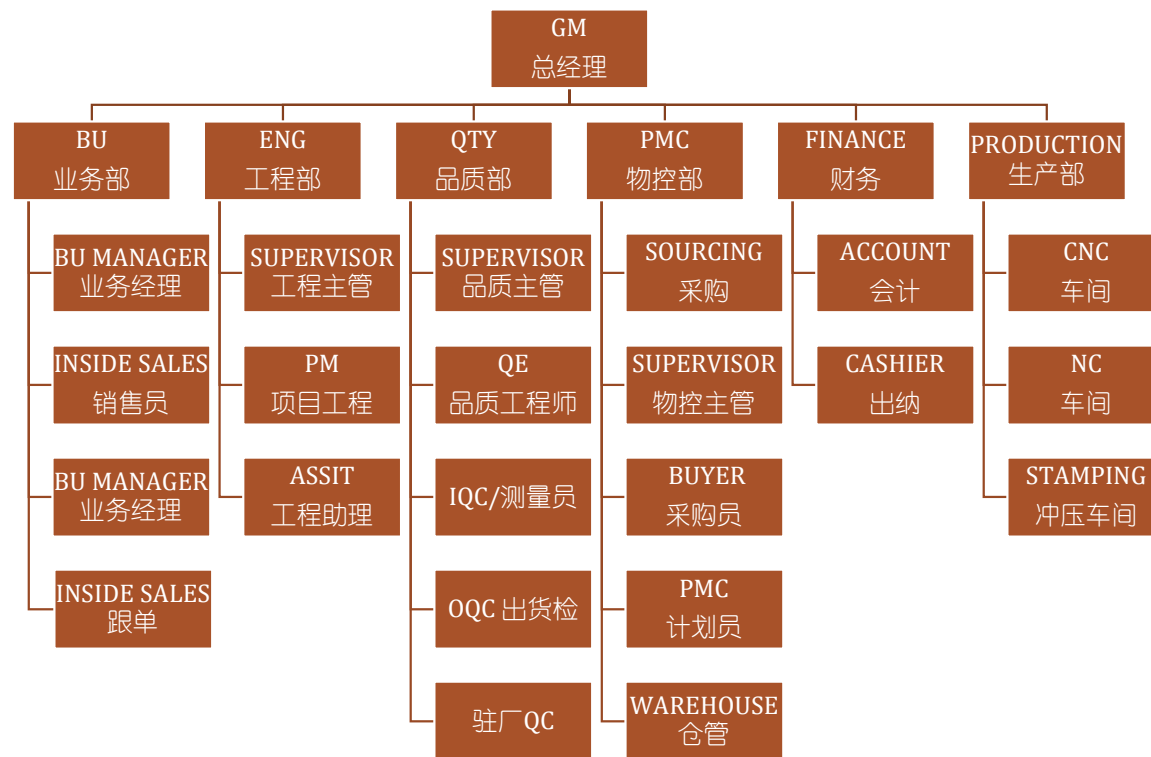
We can build prototype and mass production products within half of the usual lead time.

## **D-Competitive pricing:**

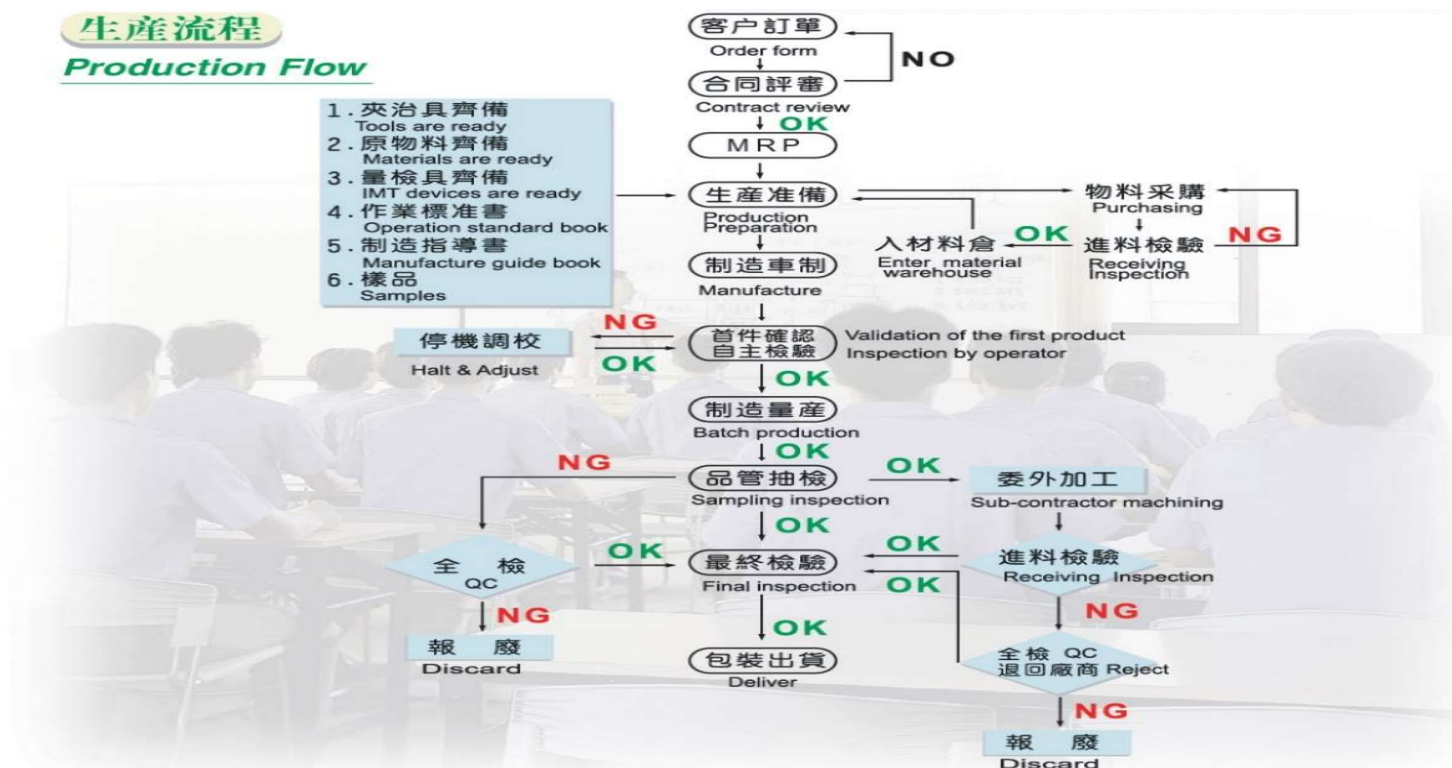
We can provide very competitive price for rational supply chain resources

---

# ORGANIZATION-CHART



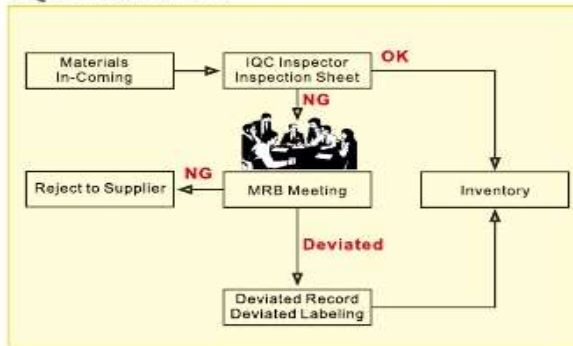
# PRODUCTION FLOW



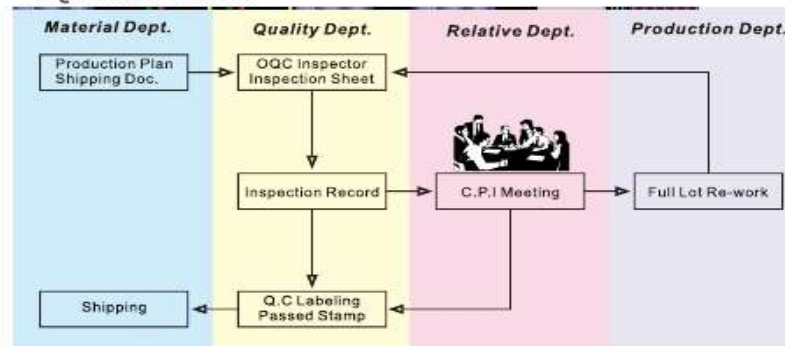
# QUALITY CONTROL FLOW

質量體系工程圖

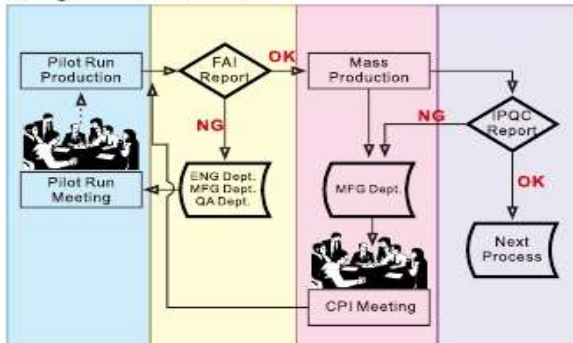
IQC Flow Chart



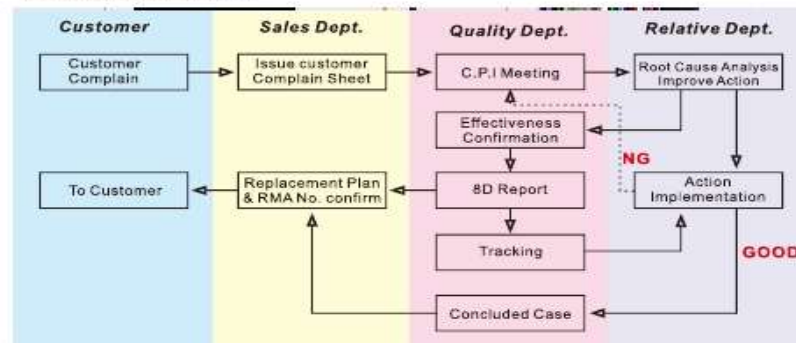
OQC Flow Chart



IPQC Flow Chart



RMA Flow Chart





## OUR ABILITIES:

- Varieties thermal modules
  - Heatsinks
  - Liquid cooling
  - Machined Parts
  - CNC
  - Stamping
  - Tooling
  - Surface treatment( including anodizing, nickel plating, passivation)
-

# EQUIMENTS LIST 1

冲床 / Punch Machine(60-300T)	19
车床 / Lathe	60
NC车床/ CNC lathe	20
加工中心 / CNC Center	35
组装线 / Composing Line	3
锯切机 / Cutting Machine	5
三角拉丝机 / Wire Drawer	2
抛光机 / Polishing Machine	4
钻铣床 / Milling Machine	7
磨床 / Grinding Machine	4
线割机 / Wire EDM	5



## EQUIMENTS LIST 2

精密整平机 / precision leveling machine	20
铣 FIN 机 / Fin-Milling Machine	3
滚 齿 机 / Hobbling machine	3
剖 沟 机 / Groove machine	3
手 啤 机 / Manual Injection Machine	9
攻 牙 机 / tapping machine	2
钻 床 / drilling machine	6
送 料 机 / feeding machine	18
喷 砂 机 / spray sand machine	2
研 磨 机 / grinding machine	3



# FACTORY FACILITIES



# FACTORY FACILITIES

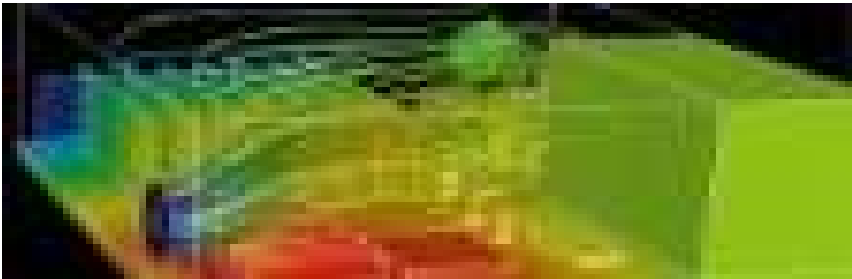
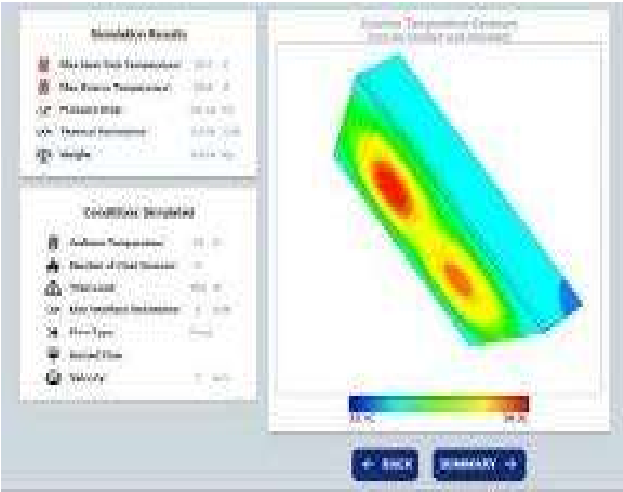
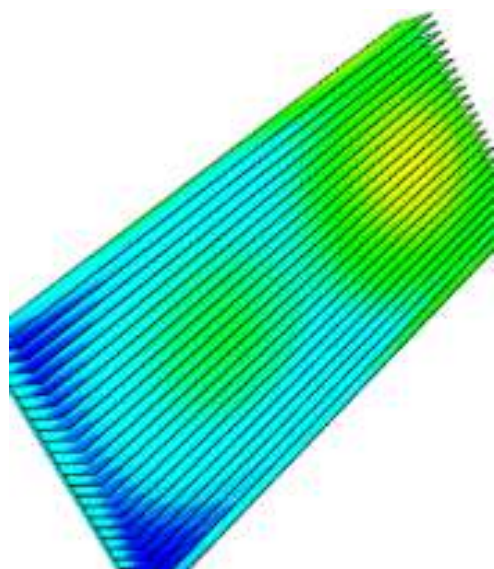


# QA LAB

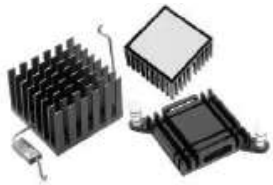




# THERMAL SIMULATION



# THERMAL PRODUCTS:



Standard IC Packages (BGA/PGA)



MAX CLIP ® Clip & Rail System  
for Power Semiconductors

## Extruded heatsinks



Epoxy Bonded & Augmented Fin

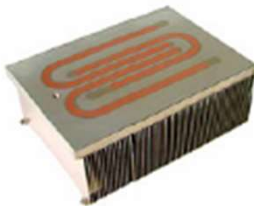


High Aspect Ratio Extrusion

## High density heatsinks



Optifin Heat Pipe Towers



Embedded Heat Pipes

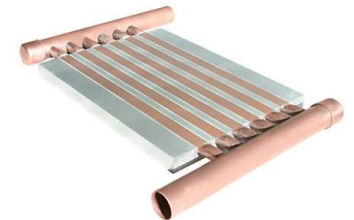
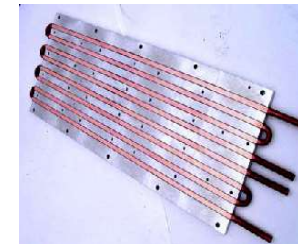


Laptop PC Heat Pipe Solutions



Heat Pipe Towers With Fan

## High Performance Heat Sink Assemblies

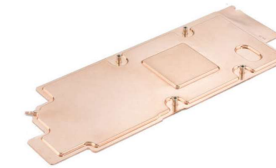
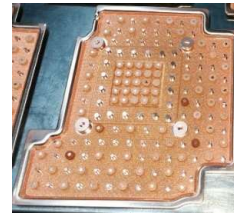


## Cold plate

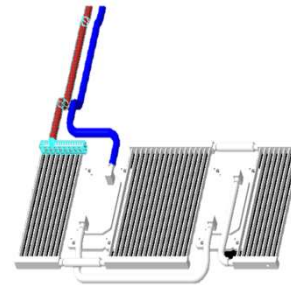




Heat pipes



Vapor chamber



Liquid cooling

# PRECIOUS TURNING&CNC PARTS





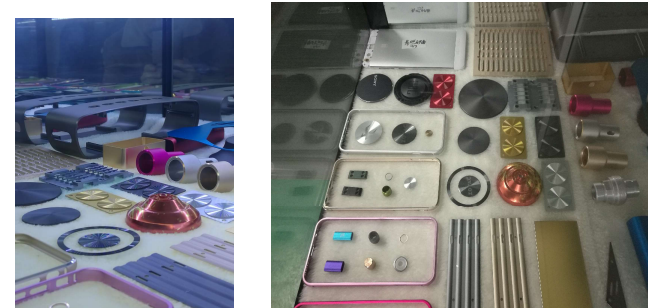
PRODUCTION STAMPING



SMALL DRIVING SHAFTS

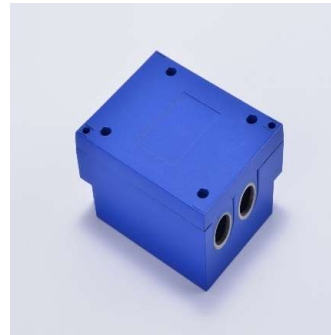


LATHE MACHINE



Anodizing products

## NC&CNC PARTS

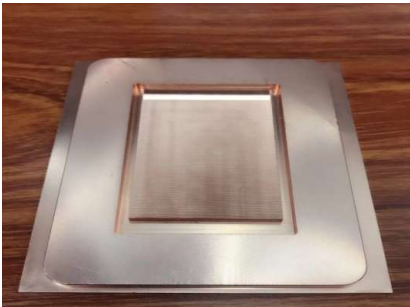
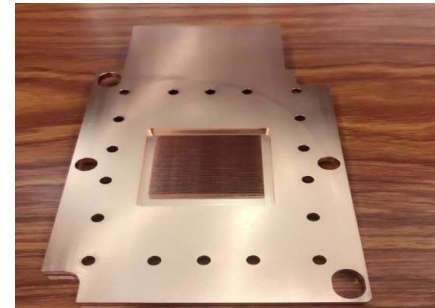
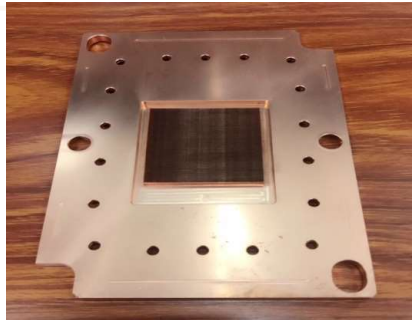
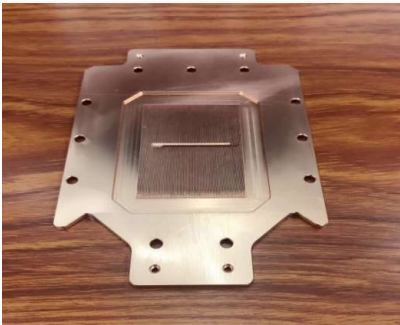


# PRECIOUS STAMPING PARTS





# SKIVED FIN



# PRODUCT APPLICATION



# CERTIFICATES





## OUR CUSTOMER

